

2020 OVERVIEW



WISE Leadership

WISE welcomed two new staff members and four board members in 2020. A bigger team means WISE can expand its reach in the community and connect more resources and knowledge to one another.



New Programs

WISE also introduced two new programs: the Healthy Relationships program and the Parent Encouragement program! Both programs collaborate with GGAL for specialized programming aimed at sexual assault prevention and parent involvement.

Program Participants

41%

middle school participants

34%

high school participants

25%

college or university participants



Representative Languages

English
Spanish

Hmong
Karen

Oromo
Thai

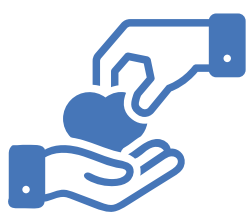
Hindi
Somali

Karenni
Vietnamese



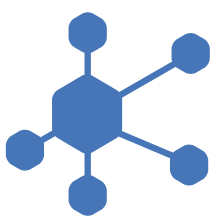
Giving

WISE received nearly \$250,000 in grants and \$5,000 in individual and major gift donations.



Mentorship

A total of 24 volunteer mentors and interns supported the GGAL, WeLEAD, and Healthy Relationships programs.



Social Media

WISE experienced a 17% increase in their social media following.



Workshops & Trainings

WISE facilitated over 20 hours of online workshops for program participants and community members. This includes financial literacy, healthy relationships, and parent engagement workshops.



Women's Initiative for Self Empowerment
570 Asbury Street, Suite 202
Saint Paul, MN 55104

651-646-3268
admin@womenofwise.org
www.womenofwise.org



@womenofwise



@womenofwisemn



@womenofwise



@womenofwisemn